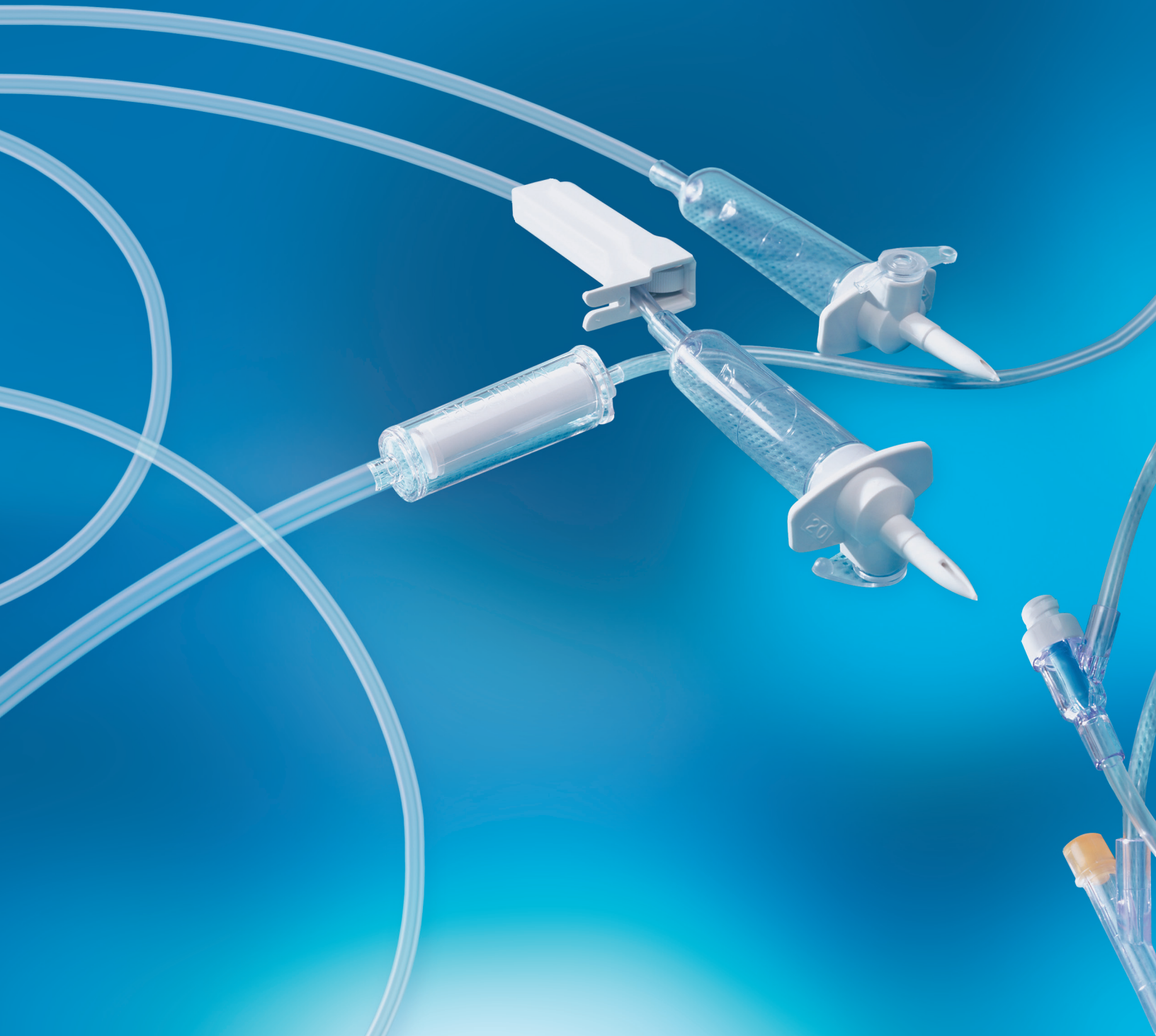




GRAVITY IV ADMINISTRATION SETS

...for the Ambulatory Surgery Setting

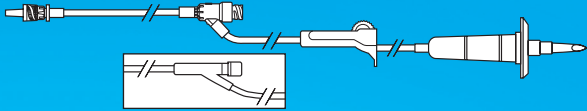


Gravity IV Administration Sets...for the Ambulatory Surgery Setting

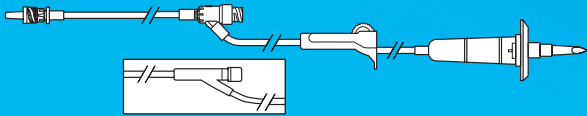
- **Economical** - high-quality, low-cost gravity IV administration sets for clinical needs as well as meeting materials management budget requirements
- **Flexible** - extremely flexible tubing, does not kink
- **Long Length** - long length sets (107", 120") for accommodating a wide variety of surgical procedures where the patient is distant from the IV pole

- **Latex Free** - Allergy free for patients - end users
- **Needle Safe** - Available with needleless access connectors, providing a needle-free environment
- Features **Non-DEHP fluid path** including tubing and drip chamber

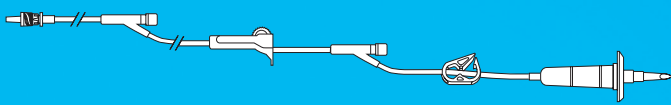
IV-009N Standard set with needleless access connector



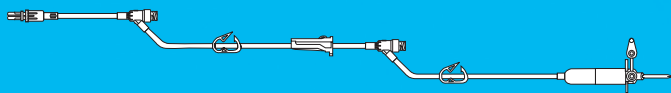
IV-013N Pediatric set with needleless access connector



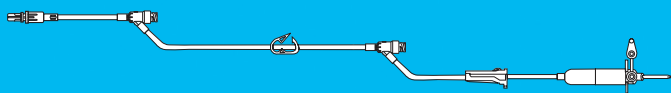
IV-016Y Set with 2 Y injection sites



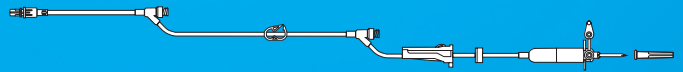
IV-016N Vented set with two needleless access connectors



IV-017N Vented set with two needleless access connectors



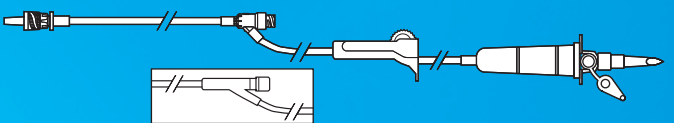
IV-018N Vented primary set with backcheck valve and two needleless access connectors



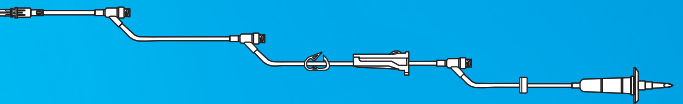
IV-019 Vented secondary set



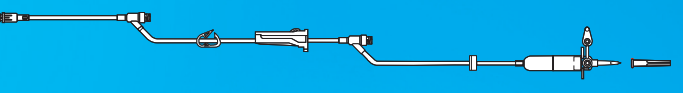
IV-020N Vented standard set with needleless access connector



IV-026N Primary set with backcheck valve and three needleless access connectors



IV-027N Vented primary set with backcheck valve and two needleless access connectors



Code#	Description (50 sets per case)	Length	Drip Rate	Priming Volume
IV-009N*	Standard set with needleless access connector	84 inches	10 drops/mL	18 mL
IV-013N*	Pediatric set with needleless access connector	84 inches	60 drops/mL	18 mL
IV-016Y	Set with two Y injection sites	100 inches	10 drops/mL	23mL
IV-016N	Vented set with two needleless access connectors (Roller clamp is below the upper needleless access connector)	107 inches	20 drops/mL	22mL
IV-017N	Vented set with two needleless access connectors (Roller clamp is above the upper needleless access connector)	107 inches	20 drops/mL	22 mL
IV-018N	Vented primary set with backcheck valve and two needleless access connectors (Roller clamp is above the upper needleless access connector)	107 inches	20 drops/mL	23 mL
IV-019	Vented secondary set	40 inches	20 drops/mL	10 mL
IV-020N*	Vented standard set with needleless access connector	84 inches	20 drops/mL	18 mL
IV-026N	Primary set with backcheck valve and three needleless access connectors	120 inches	10 drops/mL	26 mL
IV-027N	Vented primary set with backcheck valve and two needleless access connectors (Roller clamp is below the upper needleless access connector)	107 inches	20 drops/mL	24 mL

*Standard Y-site sets are available - example: IV-009N would be IV-009Y